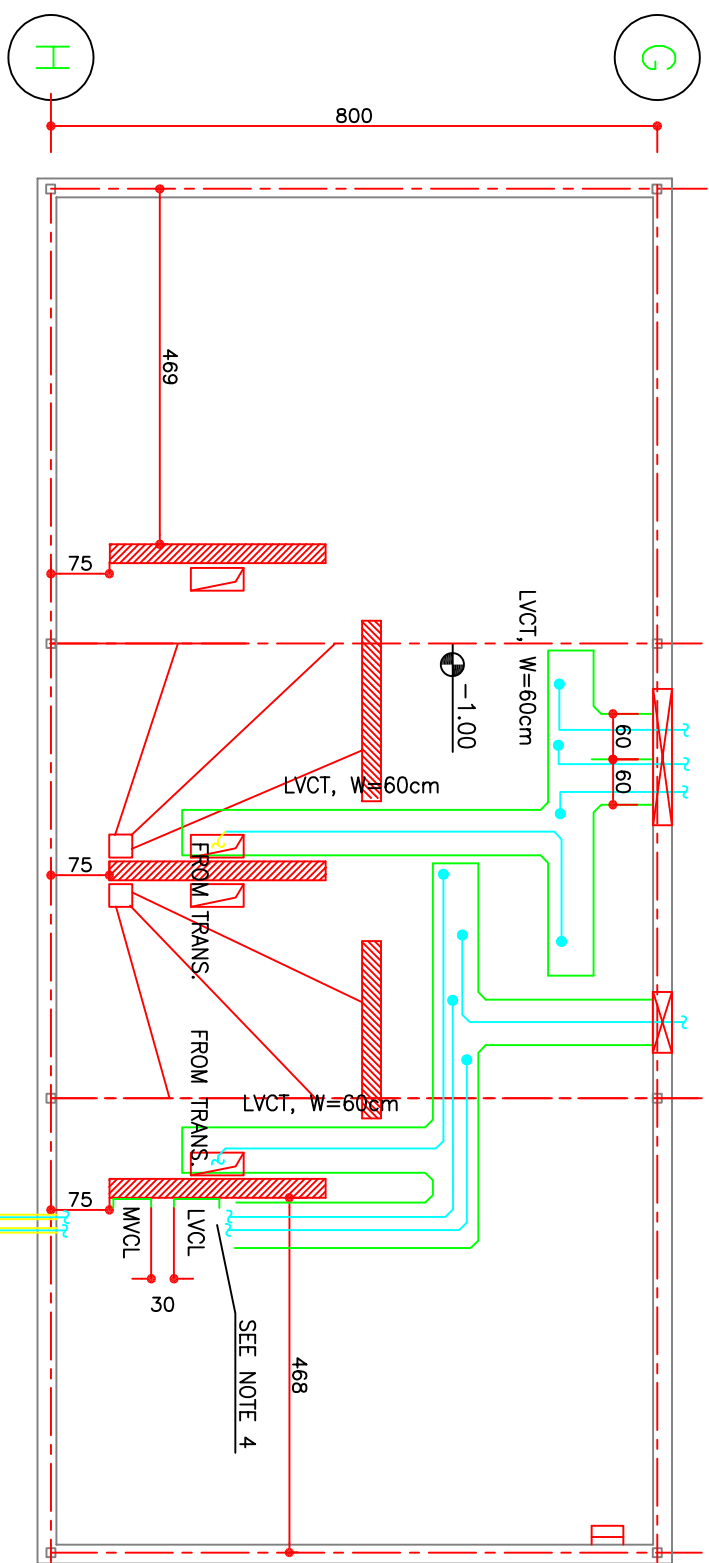
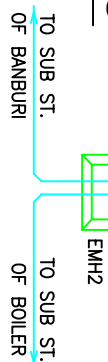


## LV PANELS & TRANSFORMERS LAYOUT



## LV CABLE TREYS & CABLE ROUTES

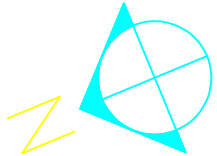


- 1- LVCT STANDS FOR LOW VOLTAGE CABLE TRAY
- 2- LVCL STANDS FOR LOW VOLTAGE CABLE LADDER
- 3- I.H. STANDS FOR INSTALLATION HEIGHT
- 4- CABLES RUN THROUGH CABLE TREY, THEN CABLE LADDER & FINALLY SLEEVES & MANHOLES
- 5- CONTRACTOR SHOULD COORDINATE ANY INTERSECTION BETWEEN ELECTRICAL AND OTHER EQUIPMENTS OR OBSTACLES AND KEEP ENOUGH SPACE BETWEEN THEM.

## NOTES & ABB.S:

LEGEND:

LVCT, WIDTH=AS INDICATED  
I.H.=+0.7m



I S S U E S			
REV	DATE	COPY	ISSUED TO
	99.12.13	S.C.	KERMAN BAREZ TIRE CO.
0	1400.10.14	1	KERMAN BAREZ TIRE CO.

**FOR CONSTRUCTION**

[illegible]